



2nd Workshop on Black Carbon

- Instrument Testing and Measurement Protocol

September 16 and 17, 2015

Utrecht, Netherlands

Current BC testing efforts in Japan

Chiori TAKAHASHI

Chiori@nmri.go.jp

National Maritime Research Institute

JAPAN

Goal

- To establish the measurement and evaluation methods of BC for marine diesel engines
- To determine the correction factors to evaluate BC values obtained by various BC measurement methods

Procedure

- To evaluate measurement and sampling methods for marine diesel engines
- To specify the influence factors on BC measurement

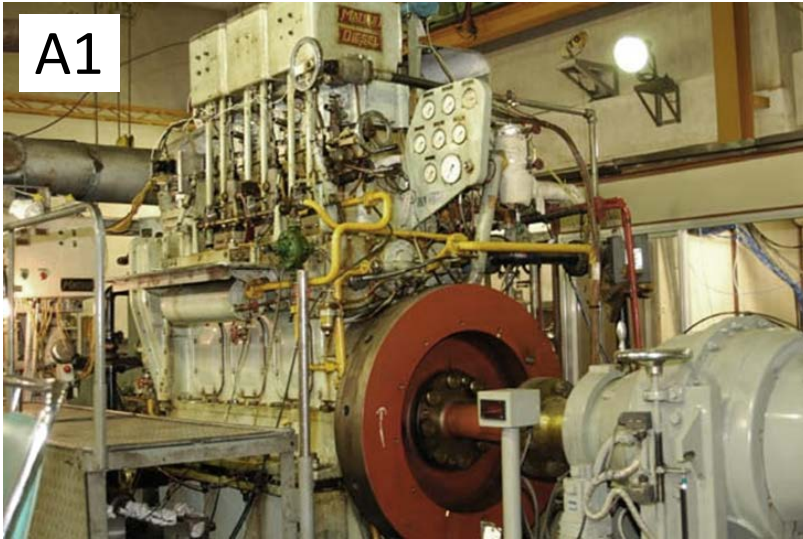
Engine	A1	A2	B
Type	4 stroke Middle speed		2 stroke Low speed
N. of cylinders	3	6	3
Cylinder bore	230mm	190mm	330mm
Piston stroke	380mm	260mm	1050mm
Rated power max.	257 kW	750 kW	1275 kW
Speed max.	420 rpm	1000 rpm	162 rpm
Fuel injection control	Mechanical	Electronic	Electronic
Fuel	HFO(2.6%S) MDO(0.6%S) LS MDO(0.08%S)	MDO(0.6%S) LS MDO(0.08%S)	HFO(2.5%S) LS MDO(0.085%S)

NMRI

Tokyo Univ. of
Marine Sci. & Tech.

NMRI

A1



A2



Tokyo Univ. of Marine Sci. & Tech.

B



> **Methods discussed at IMO**

- ➔ • FSN / Filter Smoke Meter
- ➔ • Multi-Angle Absorption Photometry (MAAP)
- ➔ • Photo Acoustic Spectrometry (PAS)
- ➔ • Thermal Optical Analysis (TOA)
 - Laser Induced Incandescence (LII)*

> **Other measurements**

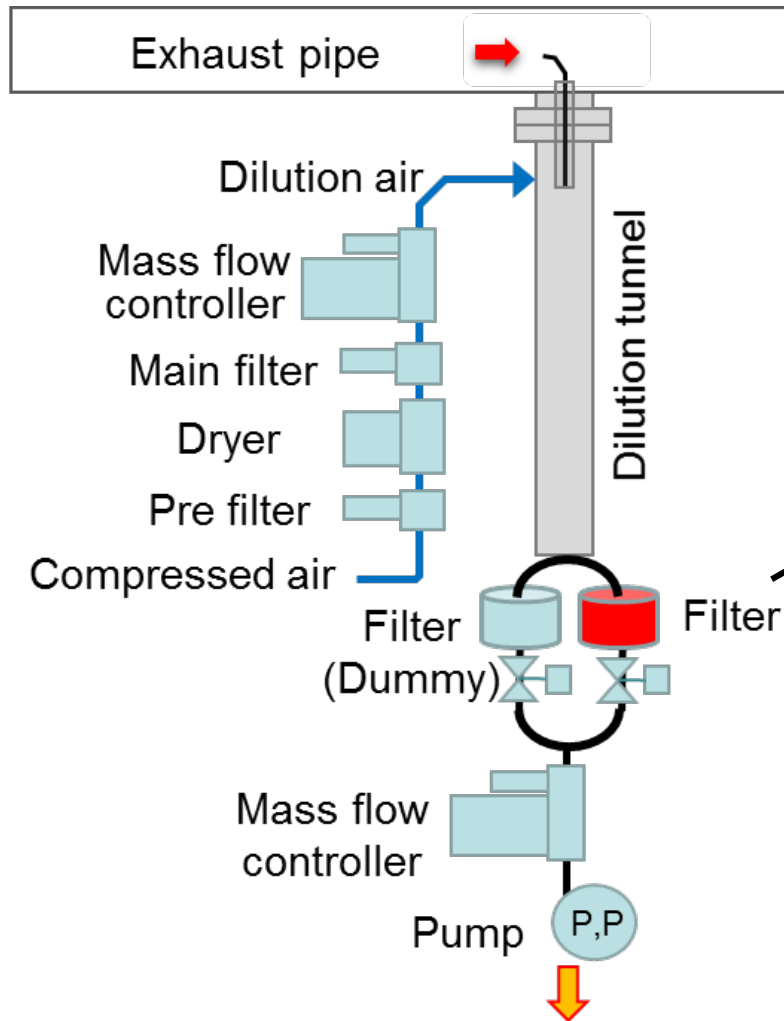
- ➔ • PM gravimetric analysis (PM)
- ➔ • Light extinction and scattering method
/ Laser Smoke Meter (LSM)

* LII equipment was not available in this study.

Method	Instrument	Measurement conditions		
		Dilution ratio	Heating option	
FSN	415S AVL	-----	Sampling line: 70°C Measurement unit: 70°C	Auto-range presampling
MAAP	MAAP 5012 Thermo Scientific	External diluter MD-9E 1000 - 3000	Dilution unit: 150°C	
PAS	MSS 483 AVL	4 – 8	Dilution cell: 120°C Sampling line: 65°C Measurement cell: 52°C	
TOA	Model-5 Sunset Laboratory			TOR, TOT NIOSH, IMPROVE
PM	ISO 8178-1:1996	Dilution tunnel 7 – 26		
LSM	LEX-635s* Tsukasa Sokken	-----	Sampling line: 120°C Measurement cell: 120°C	

*SAE International Paper #:2014-01-1580, 2014-04-01.

ISO 8178-1:1996



Partial flow dilution tunnel
connected directly to the exhaust pipe

Gravimetric analysis
weighted before and after sampling

- 1. PTFE coated glass fibre filter
(TX40HI-20-WW, Pall)
- 2. Tissuequartz filter
(2500 QAT-UP, Pall)
- 2. TX
- 3. QAT
- 4. TX

TOA (OC/EC analysis TOR/TOT)
measured by both IMPROVE & NIOSH protocols

MDO

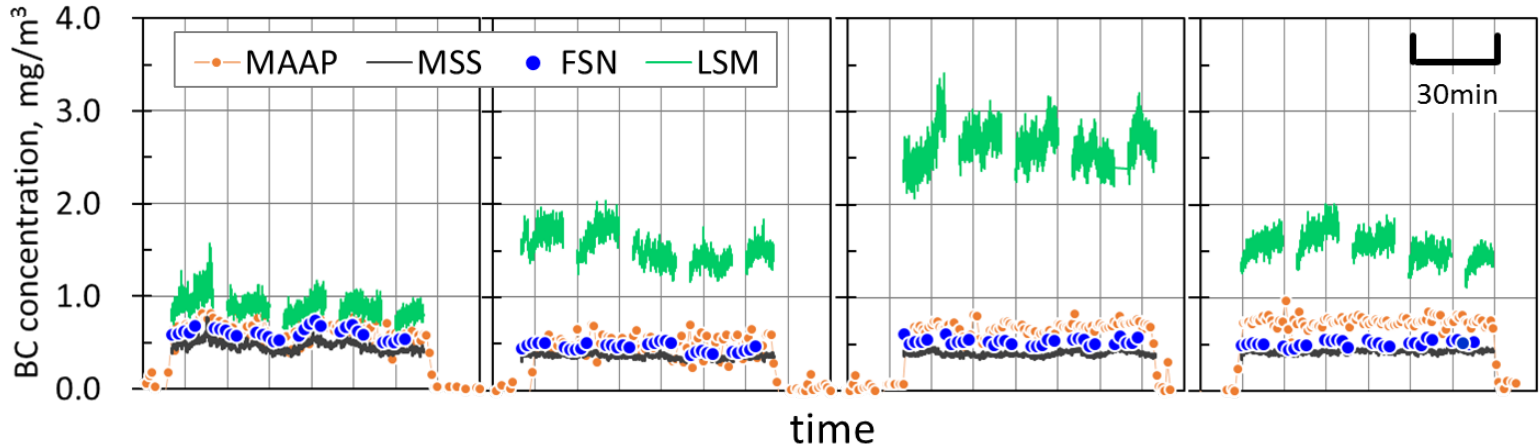
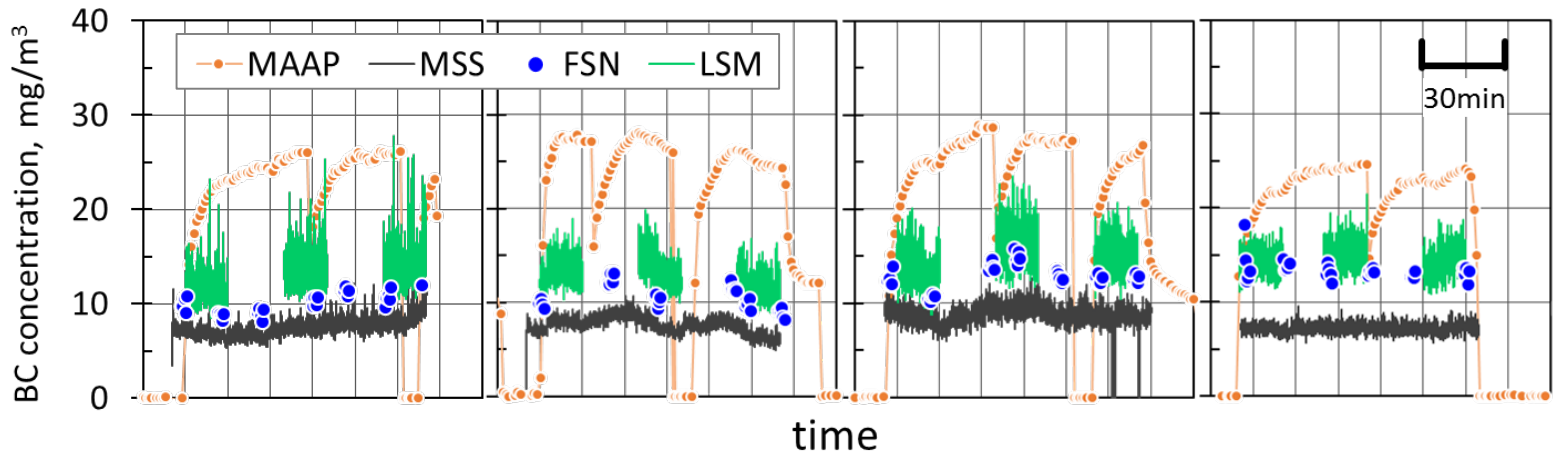
Engine load

25%

50%

75%

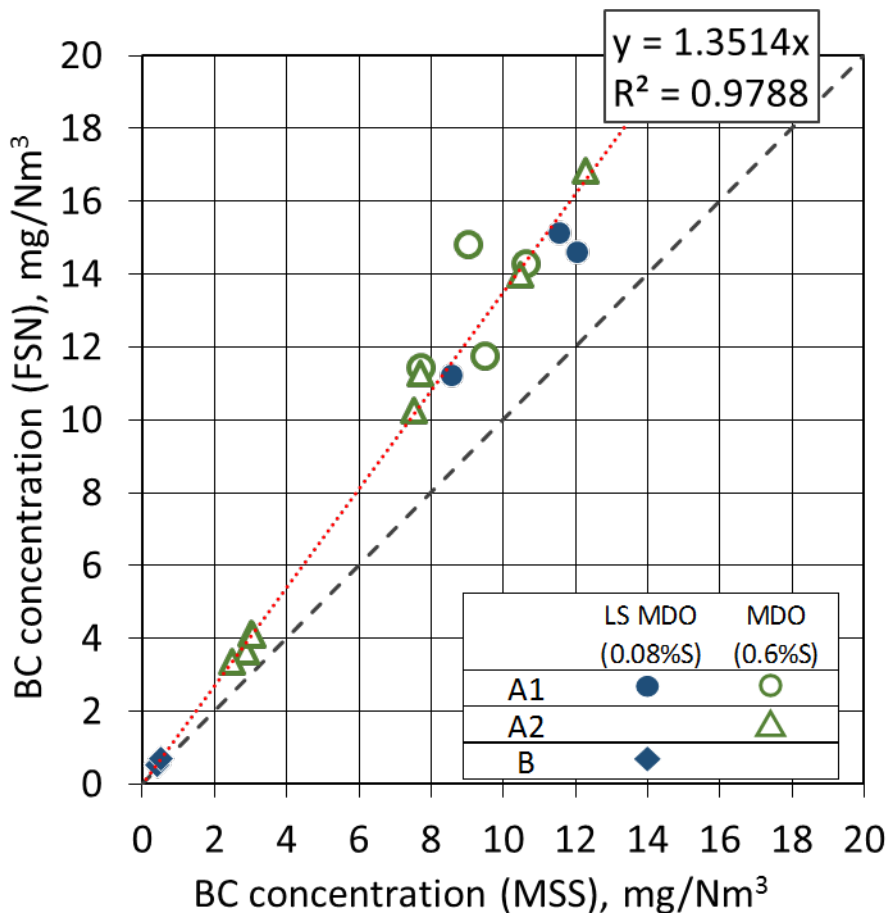
100%



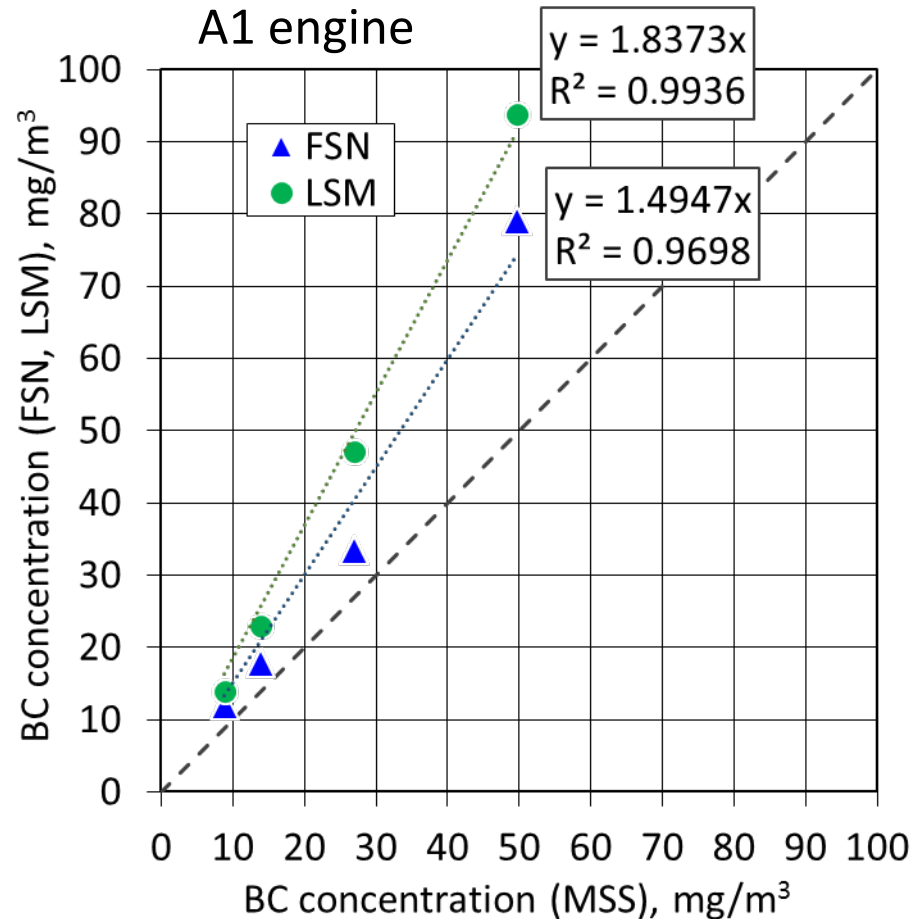
Note:

1) BC concentration values in these figures are “as-displayed” values on each instrument.

MDO



HFO



Note:

- 1) BC concentration value of MSS was corrected concerning particle losses due to thermophoresis inside the sampling line.
- 2) BC concentration unit: mg/Nm³-wet (0°C, 1 atm)



Jan. 2014

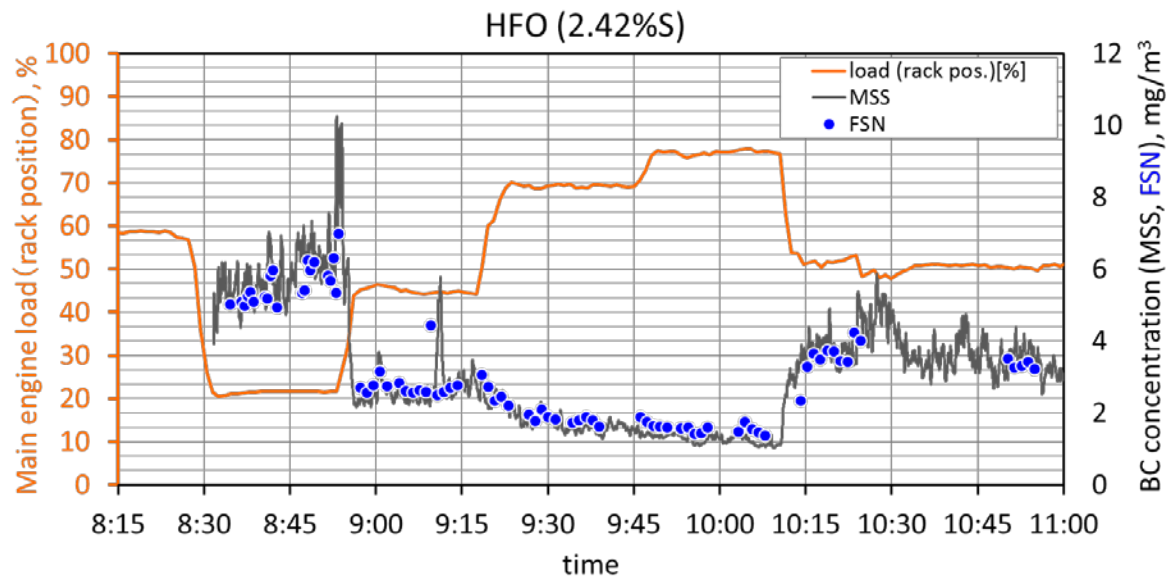
FSN, LSM

Feb. 2015

FSN, MSS



ME : Low speed 2 stroke engine



Issues to be discussed

Factors

Engine operation
 Engine type
 Operating conditions
 Fuel
 Lubricant oil
 ...

Sampling condition
 Sampling line
 Sampling point
 Dilution
 ...

Effects

Particle property
 PM composition (OC/EC)
 PM morphology
 (aggregates, particle size)
 ...

Particle losses
 Electrostatic deposition
 Thermophoresis
 Diffusion
 ...

Results

Measured value
 FSN
 PAS
 MAAP
 LII
 TOA



Correction factors



Future plans:

1. The NMRI will conduct further experimental research on BC measurement.
2. LII method will be also tested in November of this year in the NMRI.

ACKNOWLEDGEMENTS

Part of this research was conducted as research project funded by the Maritime Bureau, Ministry of Land, Infrastructure, Transport and Tourism. We would also like to show our gratitude to Professor Tatsuro Tsukamoto and Research Assistant Hidetsugu Sasaki at Tokyo University of Marine Science and Technology and Azuma Shipping Co., Ltd. for their valuable support.